



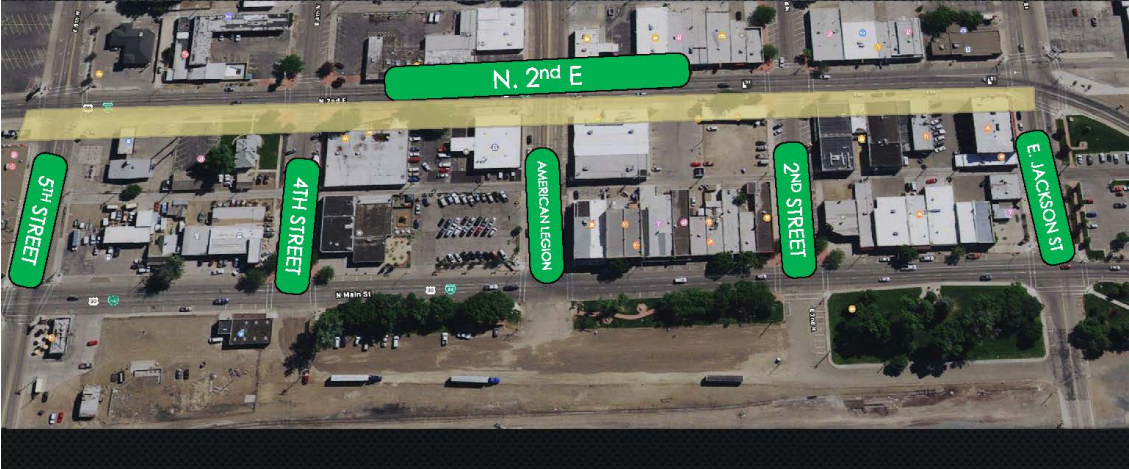
February 2020

Kicking off the new year with our Public Meeting on Tuesday, January 28th at Calvary Chapel from 6:00-7:00 pm. This meeting was an opportunity for business owners, community members and the construction team to come together and learn and share about the second phase of the Downtown Revitalization. Anthony Guho, Guho Corp, gave a presentation on their process and how it can affect businesses and the community during their discussed timelines. Phase II is scheduled to begin construction in late spring but is currently in a pre-construction process. We will have another Public Meeting to discuss the dates and timelines as to when construction will begin, so keep an eye out for that reminder in the weeks to come.



STREETSCAPES IMPROVEMENTS PHASE 2

PROJECT SCOPE

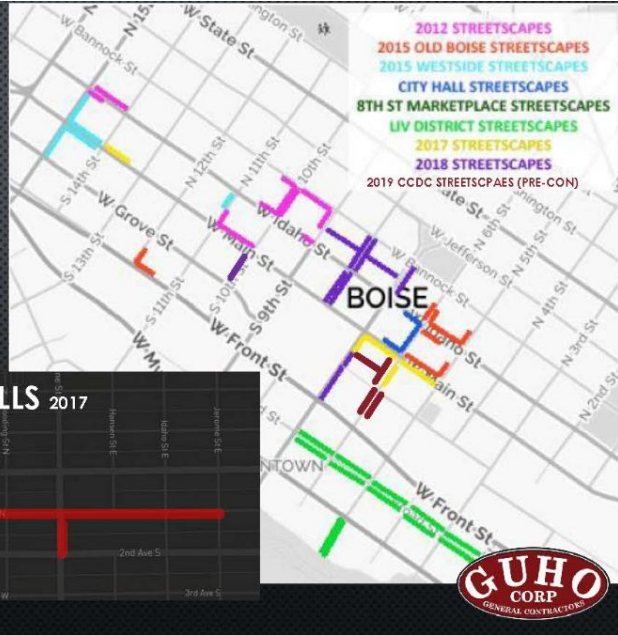
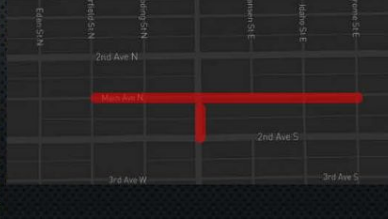


COMPLETED PROJECTS

- 60+ BLOCK FACES SUCCESSFULLY COMPLETED
- 100'S OF BUSINESS STOREFRONTS IMPROVED
- 8 PROJECTS WITH CCDC (BOISE)
- 1 PROJECT WITH TWIN FALLS
- 6 PRIVATE PROJECTS



TWIN FALLS 2017



THE CONSTRUCTION PROCESS

WHAT TO EXPECT AND WHEN



STEP 1 PRE DEMO

- LOCATE EXISTING UTILITIES
 - PAINT MARKINGS ON SIDEWALK
- SETUP TRAFFIC CONTROL
 - PARKING AND ONE TRAVEL LANE
- REMOVE SIDEWALK ITEMS
 - TABLES, NEWSPAPER, PARKING METERS
- LAYOUT PROJECT SURVEY POINTS



STEP 2 DEMO

- SETUP FENCE
- REMOVE TREES
- REMOVE SIDEWALK
- EXCAVATION

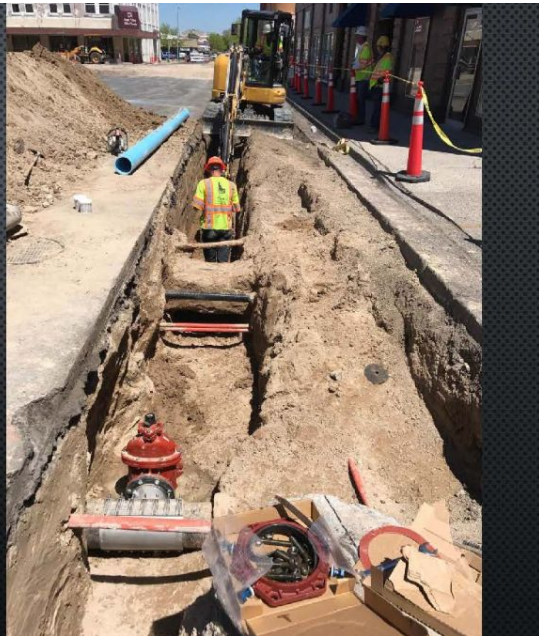


BUSINESS ACCESS DURING CONSTRUCTION



STEP 3 UTILITIES

NEW:
LIGHT POLES
IRRIGATION TO PLANTERS
STORM DRAIN SYSTEM



STEP 4 CURB GUTTER

WORK GOING ON OUTSIDE THE 4 FT
FENCE LINE

- NEW CURB AND GUTTER
- ASPHALT PATCHING

TEMP GRAVEL SIDEWALKS IN PLACE IN
FRONT OF BUSINESSES



STEP 5 CONCRETE SIDEWALK





* Photo Credit: Richard Perez, Guho Corp

The City of Mountain Home is requesting support from the Idaho Botanical Garden Lunaria Grant fund along with The City of Mountain Home Parks Department, The University of Idaho Master Gardeners and teenage volunteers from our high schools; Richard McKenna Charter High School will have students from their Ecology/Sustainability Class, Mountain Home High School's Introduction to Plant Industry Class and Bennett Mountain Alternative High School's Botany class help prep the pots and plant the flowers to help finish our streetscape by filling permanently placed and irrigated, cast concrete flowerpots with pollinator friendly, low water perennials for the first phase of the downtown revitalization on North Main St. Plant palette for the flowerpots include creeping jenny, dwarf fountain grass and "firecracker" sedum. Giving the downtown corridor the spill, fill and thrill design aesthetic.



Thanks for Subscribing!

If you're receiving this Downtown Revitalization Newsletter and would like to unsubscribe, email mhed@mountain-home.us

